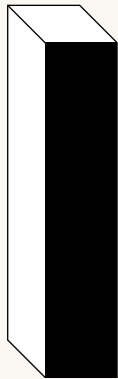
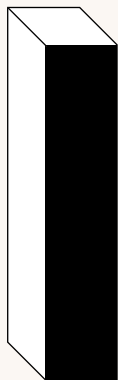
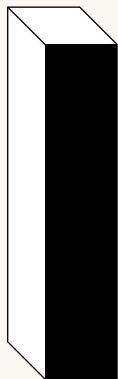
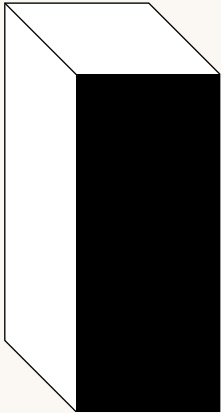
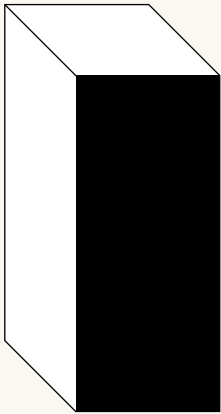


S4S

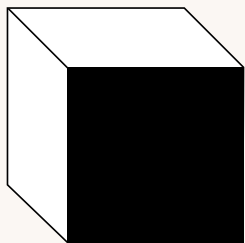
**S4S - 1 X 2 MG**3/4" x 1-1/2" | **H****S4S - 1 X 5 MG**3/4" x 4-1/2" | **H****S4S - 1 X 3 MG**3/4" x 2-1/2" | **H****S4S - 1 X 6 MG**3/4" x 5-1/2" | **H****S4S - 1 X 10 MG**3/4" x 9-1/4" | **H****S4S - 1 X 4 MG**3/4" x 3-1/2" | **H****S4S - 1 X 8 MG**3/4" x 7-1/4" | **H****S4S - 1 X 12 MG**3/4" x 11-1/4" | **H****S4S - 1 X 2 VG**3/4" x 1-1/2" | **H F****S4S - 1 X 5 VG**3/4" x 4-1/2" | **H F****S4S - 1 X 8 VG**3/4" x 7-1/4" | **H F****S4S - 1 X 3 VG**3/4" x 2-1/2" | **H F****S4S - 1 X 6 VG**3/4" x 5-1/2" | **H F****S4S - 1 X 10 VG**3/4" x 9-1/4" | **H F****S4S - 1 X 4 VG**3/4" x 3-1/2" | **H F****S4S - 1 X 7 VG**3/4" x 6-9/16" | **H****S4S - 1 X 12 VG**3/4" x 11-1/4" | **H F****S4S - 1 X 2 FJPR**3/4" x 1-1/2" | **FJP****S4S - 1 X 5 FJPR**3/4" x 4-1/2" | **FJP****S4S - 1 X 3 FJPR**3/4" x 2-1/2" | **FJP****S4S - 1 X 6 FJPR**3/4" x 5-1/2" | **FJP****S4S - 1 X 10 FJPR**3/4" x 9-1/4" | **FJP****S4S - 1 X 4 FJPR**3/4" x 3-1/2" | **FJP****S4S - 1 X 8 FJPR**3/4" x 7-1/4" | **FJP****S4S - 1 X 12 FJPR**3/4" x 11-1/4" | **FJP**



<p>S4S - 2 X 3 VG</p> <hr/> <p>1-1/2" x 2-1/2" F</p>	<p>S4S - 2 X 6 VG</p> <hr/> <p>1-1/2" x 5-1/2" F</p>	<p>S4S - 2 X 10 VG</p> <hr/> <p>23/32" x 9-1/4" F</p>
<p>S4S - 2 X 4 VG</p> <hr/> <p>1-1/2" x 3-1/2" F</p>	<p>S4S - 2 X 8 VG</p> <hr/> <p>1-1/2" x 7-1/4" F</p>	<p>S4S - 2 X 12 VG</p> <hr/> <p>1-1/2" x 11-1/4" F</p>



<p>S4S - 5/4 X 4</p> <hr/> <p>1-1/16" x 3-1/2" FJP</p>	<p>S4S - 5/4 X 6</p> <hr/> <p>1-1/16" x 5-1/2" FJP</p>	<p>S4S - 5/4 X 8</p> <hr/> <p>1-1/16" x 7-1/4" FJP</p>
--	--	--

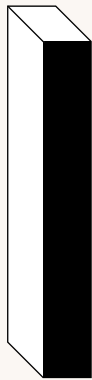


<p>S4S - 2 X 2 MG</p> <hr/> <p>1-1/2" x 1-1/2" H F</p>	<p>S4S - 2 X 2</p> <hr/> <p>1-1/2" x 1-1/2" O POP</p>
<p>S4S - 4 X 4 MG</p> <hr/> <p>3-1/2" x 3-1/2" H F</p>	<p>S4S - 4 X 4</p> <hr/> <p>3-1/2" x 3-1/2" O</p>

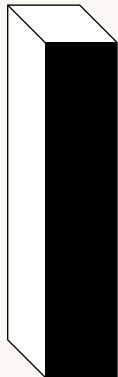
S4S



<p>S4S - 1/4 X 2</p> <hr/> <p>1/4" x 1-1/2" POP</p>	<p>S4S - 1/4 X 4</p> <hr/> <p>1/4" x 3-1/2" POP</p>	
<p>S4S - 1/4 X 3</p> <hr/> <p>1/4" x 2-1/2" POP</p>	<p>S4S - 1/4 X 6</p> <hr/> <p>1/4" x 5-1/2" POP</p>	<p>S4S - 1/4 X 8</p> <hr/> <p>1/2" x 7-1/4" POP</p>



<p>S4S - 1/2 X 2</p> <hr/> <p>1/2" x 1-1/2" POP</p>	<p>S4S - 1/2 X 4</p> <hr/> <p>1/2" x 3-1/2" POP</p>	
<p>S4S - 1/2 X 3</p> <hr/> <p>1/2" x 2-1/2" POP</p>	<p>S4S - 1/2 X 6</p> <hr/> <p>1/2" x 5-1/2" POP</p>	<p>S4S - 1/2 X 8</p> <hr/> <p>1/2" x 7-1/4" POP</p>



<p>S4S - 1 X 2</p> <hr/> <p>3/4" x 1-1/2" O POP B C W MG MPL</p>	<p>S4S - 1 X 3</p> <hr/> <p>3/4" x 2-1/2" O POP B C W MG</p>	<p>S4S - 1 X 6</p> <hr/> <p>3/4" x 5-1/2" O POP B C W MG MPL</p>	<p>S4S - 1 X 10</p> <hr/> <p>3/4" x 9-1/4" O</p>
<p>S4S - 1 X 4</p> <hr/> <p>3/4" x 3-1/2" O POP B C W MG MPL</p>	<p>S4S - 1 X 8</p> <hr/> <p>3/4" x 7-1/4" O POP C</p>	<p>S4S - 1 X 12</p> <hr/> <p>3/4" x 11-1/4" O POP</p>	

SPECIES TYPES



HEMLOCK

Hemlock is light brown with red tinges. It features uneven, commonly twisted grain and has a medium-coarse texture. A good selection if you plan on staining your jamb and frame components.



BIRCH

The wood of Yellow Birch is heavy, strong, close-grained, even-textured and shows a wide color variation from reddish-brown to creamy white. It is used for furniture, cabinetry and interior finish.



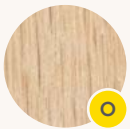
FINGERJOINT PRIMED PINE

Primed Fingerjoint Pine is great for those who plan on painting their millwork but still prefer to work with real wood as opposed to MDF.



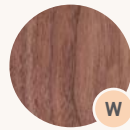
CHERRY

Cherry is a very heavy and strong wood that machines and sands very smooth. From furniture to small accessories to built-ins, this is a top class wood.



OAK

Oak is very hard, heavy and strong. Despite its density, it is very easy to work with.



WALNUT

Quite durable and strong, its colors can be light to chocolate brown with large grown rings. The sapwood is often times white.



POPLAR

This is the most cost-effective hardwood offered. The softest of the hardwoods, Poplar is excellent for paint grade but can still be stained.



MAHOGANY

One of the foremost cabinet woods in the world. Mahogany is straight grain to interlocked grain and has a medium-coarse texture. Varies slightly in color from light reddish-brown to medium red.



FIR

Douglas Fir is offered in vertical and mixed grain. Its pink color reddens over time.



MAPLE

Maple is characterized as dense and light in color. It is a fine textured and close-grained wood that does not require filling.
