



Wildwood™ Composite Cladding





The beauty of wood meets advanced composite technology.

Bring your vision to life with Fiberon® Wildwood™ composite cladding. Available in two nature-inspired color collections that feature realistic embossing patterns and a wide variety of board lengths, Wildwood composite cladding provides you with endless opportunities to explore your creativity.

- Offers a long-lasting, maintenance-free, sustainable alternative to traditional wood cladding.
- Available in a variety of board lengths and widths for more design solutions. Longer lengths result in fewer seams, creating a cleaner aesthetic.
- Mix and match board lengths and colors to create a unique, custom look for each project.
- Priced competitively to wood and costs less than most rainforest wood cladding or engineered cladding products.
- The durable composite core ensures exceptional resistance to rotting, cracking, insects and decay.
- Features our exclusive PermaTech® cap layer that protects against fading and staining.
- Backed by a 50-year warranty covering stain, fade and performance.

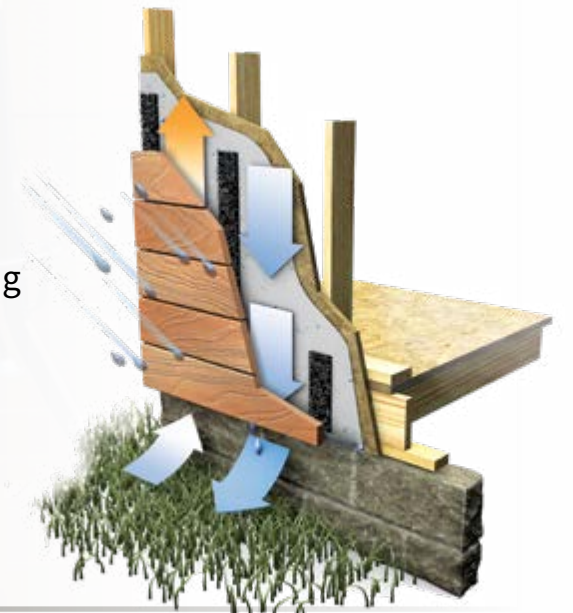
Note: See your Fiberon seller or visit www.fiberoncladding.com for details on limited warranties and exclusions.



To help trade professionals address stringent building and energy codes, Wildwood™ composite cladding facilitates better management of bulk water infiltration, capillary water intrusion and water vapor exfiltration.

- Deflection—Keeping as much precipitation off the exterior wall enclosure as practically possible.
- Drainage—Draining away any water that does strike and penetrate the cladding.
- Drying—Providing sufficient ventilation to evaporate residual moisture, and arranging materials for gradual drying by diffusion.
- Durability—Selecting materials that can withstand periodic wetting without deterioration over the service life of the enclosure.

Proper material choice is critical. Rainscreen systems are one of the most effective methods for managing moisture and mitigating its damage to residential and commercial structures.



One of the **most effective methods** for managing moisture.



fiberon® balance

94%
recycled



Fiberon® products are free of toxic chemicals and contain up to 94% recycled content.

Through Fortune Brands Home & Security, we're partnering with the National Forest Foundation in their effort to plant 50 million trees.

Our products last and are sustainable from start to finish.

Contains 94% pre- and post-consumer recycled content.

An unlikely match. You're usually asked to choose between wood or plastic. Natural or synthetic. Paper or plastic.

Our sustainability story starts with this unlikely match — all the best qualities of recycled wood, combined with the long-lasting resilience of recycled plastic. The blending of these two materials is the reason why our products last, and why they're sustainable from start to finish.



Trees are beautiful.

About half of what's in our cladding comes from recycled wood — sawdust and leftover material that would otherwise be discarded.

One Million

Healthy trees saved every year from deforestation.



15,000 Football Fields of Trees



Plastic lasts a lifetime...or 10.

The other half of the core of our cladding comes from recycled plastic. Think grocery bags and recycled packaging material.

100 Million

Pounds of recycled plastic used per year.



Weight of Two Full Cruise Ships



Resourceful to the last drop.

Manufacturing composite cladding requires a constant source of water. The good news is, we reuse almost all of it with our closed-loop system.

3.5 Billion

Gallons of water prevented from entering the waste stream.



5,300 Olympic Swimming Pools



Don't waste a thing.

We reuse 98.5% of the waste from our manufacturing process — from misfit boards to router clippings. Every day.

98.5%

Manufacturing waste repurposed every day.



Annual Household Food Waste Reduced to One Bunch of Bananas



Fiberon® Wildwood™ composite cladding features two globally inspired collections – Eden and Sahara – that include rich colors, realistic textures and the organic warmth and beauty of real wood.

The Eden Collection
is inspired by lush, tropical forests and features an array of exotic hues.

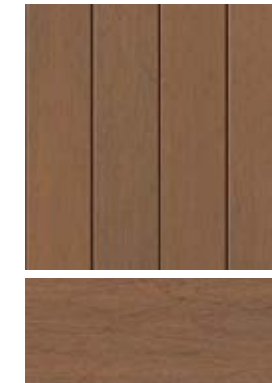
WENGE



MERANTI



TUPELO



MORA



KOA



The Sahara Collection
draws inspiration from arid, sandy landscapes and includes rich desert tones.

MULGA



PALO



SUMAC





Wildwood™ Composite Cladding Profiles

Fiberon® Wildwood composite cladding features an open-joint profile that utilizes a concealed face fastener for a seamless look.



Nominal thk. / wd.:	1 in. x 6 in.	1 in. x 8 in.	1 in. x 12 in.
Actual thk. / wd.:	(0.75 in. x 6 in.)	(0.75 in. x 7.25 in.)	(0.75 in. x 11.25 in.)
Length:	12 ft., 16 ft. or 20 ft.	12 ft.	12 ft.

- Can be used in horizontal or vertical applications to create a variety of looks, from subtle and rustic to bold and modern. Wildwood composite cladding can also be used for soffits, ceilings, rainscreens and more.
- The open-joint profile utilizes a concealed face fastener for a seamless look.
- The composite construction never needs sanding, staining or painting, making it perfect for difficult-to-reach applications.
- Wood is susceptible to mold, decay and insects. Composite materials will not split, crack or rot, retaining their beauty for years to come.
- Fiberon Wildwood composite cladding meets the requirements of ASTM E84 and CA SFM 12-7A-1.

Fiberon Wildwood meets the requirements of ASTM E84 and CA SFM 12-7A-1.

Create a variety of looks, from
subtle and rustic to **bold and modern.**

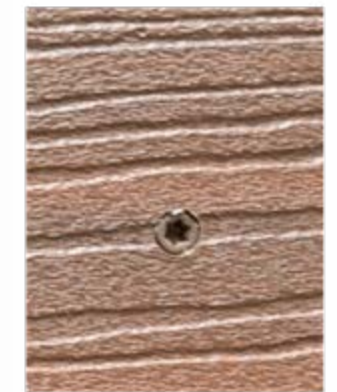
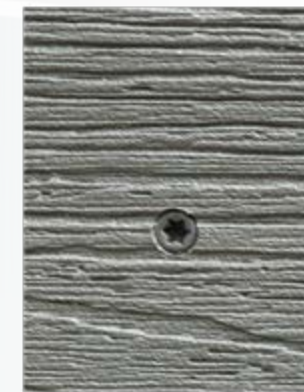


Color-matched fasteners provide **seamless beauty.**

Cladding Fastener Systems

Choosing the right fasteners for your desired aesthetic and framing components is key. Alternative furring materials and wall assemblies may require different fastener lengths.*

Metal and wood screws are available for use with composite boards. For fastener screws, 16 in. on-center spacing and a minimum of 1 in. from the edge and end of the board is recommended.



*Consult with the fastener manufacturer for compatibility concerns and any special considerations.

Fiberon® Wildwood™ composite cladding outperforms the rest.

		fiberon®	
		Wildwood™ Composite Cladding	Fiber Cement Cladding
ECONOMICS	Country Of Origin	Made in USA	Varies
	Installed Cost (per sq.ft.)	Low Cost	Low Cost
	Special Tools or Skill Required	Basic knowledge.	Ventilation, masks and special cutters.
	Skill Level of Labor	Labor is readily available. Skill level required is low.	Labor is readily available. Skill level needed is low.
	Pre-Finished	Pre-finished	Needs to be finished on jobsite, unless pre-finished.
	Lead Times	< 2 weeks	< 2 weeks

ENVIRONMENT	Manufacturing	Made in USA in bi-coastal plants and stocked throughout North America. Shipping is nominal.	Made in relatively close proximity to most jobsites. Shipping costs are low.
	Recycled Content	High	Low to None
	Environmental Impact	94% recycled content. No refinishing is required. Maintenance is low impact, transportation impact is low.	Factory pre-finishing is optional. Regular painting required. Frequency dependent upon coating used. Environmental impact is moderate.

WARRANTY	Commercial Warranty	Yes	Yes
	Performance Warranty	Yes	30
	Finish Warranty	50-Year Warranty	0-15
	Stain Warranty	50-Year Warranty	No
	Fade Warranty	50-Year Warranty	No
	Fastener Warranty	Varies by manufacturer	No
	Impact Resistance	Very High	Very Low

DESIGN USES	On-Grade Façades	Yes	No
	Above-Grade Façades	Yes	Yes
	Soffit	Yes	Yes
	Ceiling	Yes	No
	Vertical	Yes	Yes
	Horizontal	Yes	Yes
	Diagonal	Yes	No
	Curved	Yes	No

Wood Cladding	PVC	HPL	Metal
Harvested from tropical rainforests	Varies	Varies	Varies
Moderate Cost	Moderate Cost	High Cost	High Cost
Titanium bits, router bits and saw blades. Special end treatments.	Basic knowledge.	Training required.	Training required.
Labor is readily available. Skill level required is low.	Labor is readily available. Skill level required is low.	Labor may not be readily available. Skill level required is moderate to high.	Labor may not be readily available. Skill level required is moderate to high.
Needs to be sealed on ends and finished on all four faces on jobsite.	Pre-finished	Pre-finished	Pre-finished
> 2 weeks	< 2 weeks	> 2 weeks	> 2 weeks

Rainforest species sources where grown. Shipping cost is significant.	Made in PA only. Shipping cost can be significant.	Made offshore. Shipping costs can be significant.	Made in Canada. Shipping costs can be significant.
None	Moderate	None	Low
Rainforest deforestation, requires annual maintenance to maintain color; will still experience significant degradation. Environmental impact estimated as high.	No refinishing is required. Maintenance is low impact. Transportation impact is moderate.	No refinishing is required. Maintenance is low impact. Transportation impact is moderate.	No refinishing is required. Maintenance is low impact. Transportation impact is moderate.

No	No	Yes	Yes
None	Lifetime Limited	Yes	Yes
None	30 Year	10 Year	50 Year
No	Yes	Yes	Varies
No	Yes	No	Yes
No	25 Year	No	No
Very High	High	High	Very Low

Yes	No	No	No
Yes	Yes	Yes	Yes
Yes	Yes	Yes	Yes
Yes	Yes	Yes	Yes
Yes	Yes	Yes	Yes
Yes	Yes	Yes	Yes
Yes	No	No	No
Yes	No	No	No



WARNING:
Drilling, sawing, or machining wood-composite products containing wood fiber can expose you to wood dust, a substance known to the State of California to cause cancer. Avoid inhaling dust generated from wood-composite products or use a dust mask or other safeguards for personal protection. For more information, go to www.P65Warnings.ca.gov.

Note: See your Fiberon seller or visit www.fiberoncladding.com for details on limited warranties and exclusions.



Discovery Tool

Learn more at fiberondecking.com/discovery. The Fiberon Discovery Design Tools app can be found on the Apple App Store and the Google Play Store.



Apple and the Apple logo are trademarks of Apple Inc., registered in the U.S. and other countries. App Store is a service mark of Apple Inc. Google Play and the Google Play logo are trademarks of Google Inc.



Wildwood™ Composite Cladding

Learn more at fiberoncladding.com | 1.800.573.8841

distributed by

OREPAC

©2021 Fiberon. All rights reserved. FIBERON and the Fiberon logo are trademarks of Fiber Composites, LLC. Registered trademarks are registered in the U.S. and may be registered internationally.

Made in the USA

MKT LIT BROCHURES RSN 02/21