



Product  
Overview

A photograph of a multi-story wooden building under construction. The frame consists of numerous vertical studs and horizontal joists, with a prominent staircase on the left side. The lighting is warm and natural, highlighting the wood's texture.

BUILDING VALUE  
IN ALL DIMENSIONS



# SERVING GLOBAL MARKETS FOR HALF A CENTURY

Interfor has been a global player in the lumber business since 1963. We have operations across North America, offices in Europe, Japan and China and customers around the globe. We provide specialized and sophisticated lumber-buying customers with single source access to one of the world's most diverse ranges of structural, industrial and appearance lumber products.



Reliable,  
quality  
fiber  
supply

Rigorous  
safety and  
environmental  
standards

The broadest  
range of  
products  
anywhere

Unmatched  
customer  
service and  
logistics

The perfect  
lumber  
product for  
every project

# 3 BILLION BOARD FEET A YEAR AND GROWING

Interfor is one of the world's largest lumber producers. With annual capacity of 3 billion board feet, and world-class facilities, we serve global customers, strengthen local economies and build value for our employees and shareholders. And now we're embarking on a bold new vision, capitalizing on opportunities and growing into an even more robust future.





Truss Lumber

Fascia

Siding

Studs

Timbers

Trim

Decking

Dimension

Joists

MORE PRODUCTS  
MORE CHOICE

# THE RIGHT PRODUCT AT THE RIGHT TIME

Interfor's diverse and growing product offerings mean more choice and more supply — all backed by our commitment to excellence and quality. We provide our customers with single source access to a diverse line of products, made from a wide variety of wood species. From fine grain appearance products to quality structural components, we provide the range and exacting standards required for wood-based building systems.

## THE PRODUCTS WE MANUFACTURE ARE IN DEMAND AROUND THE WORLD

### Structural Lumber

Interfor dimension lumber and studs meet exacting performance standards for residential, commercial and industrial applications. Species include Hem-Fir, Douglas-Fir, SPF and Southern Yellow Pine.

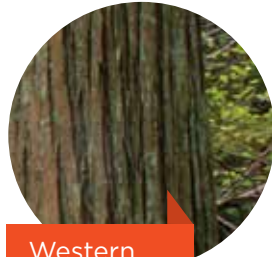
### Industrial Lumber

We supply a wide range of lumber grades that are remanufactured and processed into wood packaging and crating materials. Used in both consumer and commercial applications, these high value wood packaging solutions are used to ship products across global markets. We offer Douglas-Fir, Hem-Fir, SPF and Southern Yellow Pine products that meet the highest standards for strength and stability, to ensure that the goods you are moving arrive safely.

### Appearance Lumber

Our product offering ranges from siding, decking and paneling to Japanese house components and stock for windows and doors. We also supply specialty materials in the dimensions, lengths and grades our customers require. Species include Western Red Cedar, Hemlock, Douglas-Fir, Southern Yellow Pine, Lodgepole Pine and Ponderosa Pine.





Western  
Red Cedar

Consistently high quality and an ideal choice for appearance projects. With straight, even grain, tight knots and uniform texture, it's renowned for beauty, rich color and building properties.

#### FEATURES

- Dimensionally stable, low shrinkage, resists warping
- Lightweight, strong, versatile
- Naturally resistant to decay and insect damage
- Pitch- and resin-free

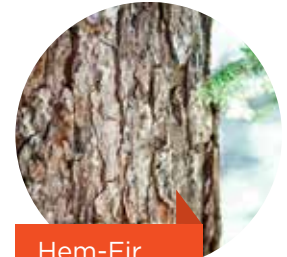


SPF

High-grade softwood timber mix of Spruce, Lodgepole Pine and Subalpine Fir that is ideal for structural framing in all types of residential, commercial, industrial and agricultural applications.

#### FEATURES

- Strong, durable and stable
- Small tight knots
- Great workability
- Appealing light color
- Smooth, even grain



Hem-Fir

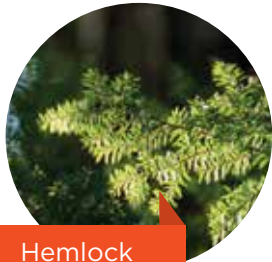
The perfect combination of strength, versatility and beauty. Our high quality Hemlock and Amabilis Fir mix is well suited for load-bearing and load-carrying requirements of residential, light commercial and heavy construction.

#### FEATURES

- Strong, straight-grained and stiff
- Light and bright in color, relatively pitch-free
- Resists splitting when nailing and screwing, saws easily

# QUALITY WOOD PRODUCTS COME FROM GREAT TREES





Hemlock

Premium, fine-grained timber products meet the very highest standards for stability and strength. A first choice for builders around the world looking for unsurpassed versatility and superior performance.

**FEATURES**

- High bending strength, shear strength and stiffness
- Clear, lustrous surface
- Pitch- and resin-free
- Consistent coloring and grain

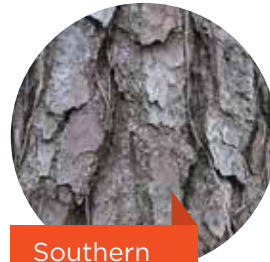


Douglas-Fir

A superior choice for the most demanding structural, appearance and joinery projects. Revered among builders for strength and durability and the aesthetic appeal of its rosy color and straight, vertical grain.

**FEATURES**

- Lightweight, strong and versatile
- Dimensionally stable
- Resists water and wind decay
- Tight-knotted, close-grained, and non-porous
- Great workability



Southern Yellow Pine

Meets the highest grading standards for strength; ideal for a wide range of structural and nonstructural applications. Known as one of the strongest woods and for its distinctive grain pattern.

**FEATURES**

- Dimensionally stable
- Minimal shrinkage or swelling
- Superior load-bearing capacity
- Highly resistant to wear



Ponderosa/Lodgepole Pine

Premium, straight-grained timber products renowned for their appealing yellow color, straight grain, uniform texture and exceptional working qualities. The first choice among expert builders for applications requiring close-fitting joints.

**FEATURES**

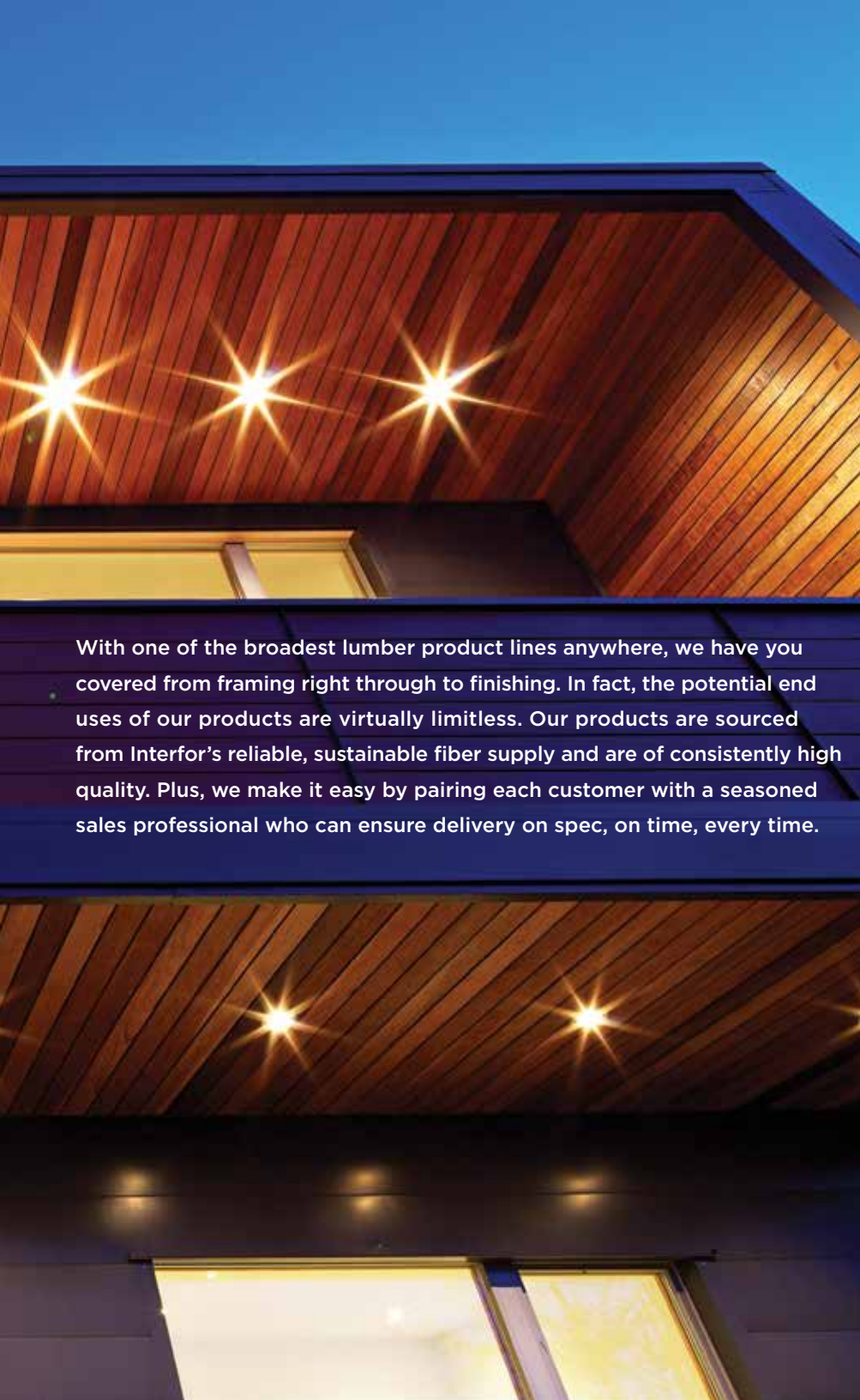
- Relatively unaffected by humidity changes
- Dimensionally stable
- Extremely lightweight
- Little tendency to check, warp or split



A photograph of a modern building at dusk. The building features a dark blue or black exterior with horizontal wood slat panels on the upper levels. Warm interior lights are visible through large windows, and several bright, starburst-shaped lights are embedded in the wood-paneled ceiling. The sky is a deep blue, and the silhouettes of trees are visible in the background.

THE PERFECT PRODUCT  
FOR EVERY PROJECT

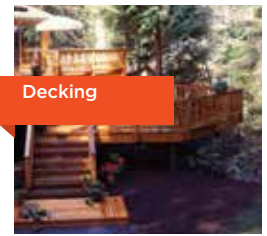




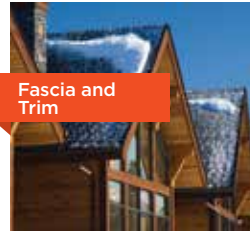
With one of the broadest lumber product lines anywhere, we have you covered from framing right through to finishing. In fact, the potential end uses of our products are virtually limitless. Our products are sourced from Interfor's reliable, sustainable fiber supply and are of consistently high quality. Plus, we make it easy by pairing each customer with a seasoned sales professional who can ensure delivery on spec, on time, every time.



Appearance  
Timbers



Decking



Fascia and  
Trim



Framing



Furniture



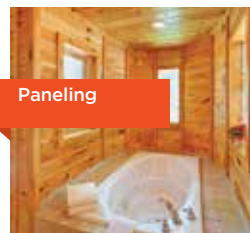
Industrial  
Packaging



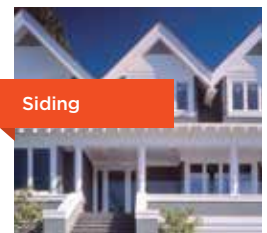
Japan Zairai



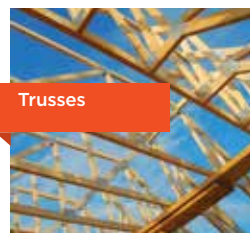
Millwork



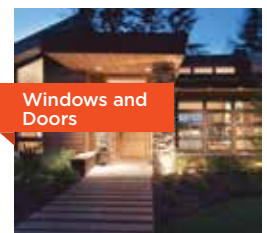
Paneling



Siding



Trusses



Windows and  
Doors

# RESPONSIBLE, SUSTAINABLE AND COMPETITIVE

Wood is the ultimate natural, renewable and strong building material and the global demand for it will only grow. But wood products only have value if we can produce them in ways that generate economic growth, create social benefits and minimize impact on the environment. It's a fine balance that we achieve through our commitment to collaboration and continuous improvement.

## **We operate in a sustainable manner at all times**

We believe that the environment should never be compromised. We are a leader in sustainable forestry and adhere to the highest standards in woodlands management. Our practices and facilities are routinely audited and we are proud of our performance record.

## **We contribute to healthy local economies**

We understand the interconnectedness between our people and the communities where they work and live. Supporting a healthy economy and environment is a key part of our business philosophy and practice.

## **We embrace world-leading safety standards**

Nothing is more important than the safety of our employees. We believe that health and safety are the uncompromised right and responsibility of all employees. That's why we integrate safety into every facet of our work and adhere to world-leading safety standards at all of our operations.





SUSTAINABLE  
FORESTRY  
INITIATIVE  
SFI-00176



PEFC™  
PEFC/29-31-06





**INTERFOR**

Building Value™

[interfor.com](http://interfor.com)

WOOD IS SIMPLY A BETTER  
BUILDING MATERIAL

