



The Premium  
Pocket Door Solution



distributed by OREPAC

# Pocket Frame Systems

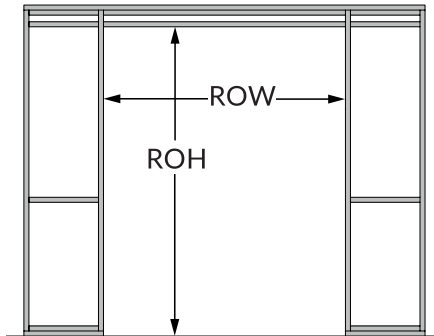
The CS Cavity Slider™ is a practical solution for those areas where there is not enough space for a swinging door. In addition to its space saving attributes in restrooms, hallways and laundries, it can be used with confidence for architectural feature openings around your project.

- Structurally robust due to its construction from aluminum extrusions
- Easy to assemble and install
- Pocket frame accommodates 1-3/8" and 1-3/4" doors up to 4'0" x 8'0"
- Can be cut down to size on site
- Suitable for residential and commercial projects  
(meets Type 1 construction code without any combustible materials)

## Rough Opening

DH = Door Height DW = Door Width

Dimension	Inches
RO Height	DH + 4-1/4"
RO Width   Single	(DW x 2) + 2"
RO Width   Bi-Parting	(DW x 4) + 2"



## How to Order

### 1. Choose Size

Frames can be cut down on site so maximize size for each model:

Model	Max Door Size
CSPDF2480	2/0 x 6/8
CSPDF2880	2/4 x 6/8
CSPDF3080	2/6 x 6/8
CSPDF3280	2/8 x 6/8
CSPDF3480	2/10 x 6/8
CSPDF3680	3/0 x 6/8
CSPDF2496	2/0 x 8/0
CSPDF2896	2/4 x 8/0
CSPDF3096	2/6 x 8/0
CSPDF3296	2/8 x 8/0
CSPDF3496	2/10 x 8/0
CSPDF3696	3/0 x 8/0
CSPDF4896	4/0 x 8/0

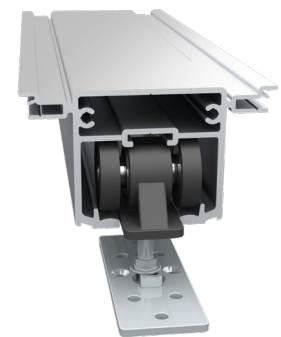
### 2. Choose a Carriage Pack (one per door)

Includes: Carriages, mounting plates, T-Guide, fixing screws and adjusting wrench

Standard	M6 (200 lb)
	M8 (500 lb)

SofStop® Single Soft Close	Minimum Door Width	
	Single	Bi-parting
0-176 lb	25"	28"
176-264 lb	28"	31"

SofStop® Twin	Minimum Door Width	
	Single	Bi-parting
0-176 lb	33"	36"



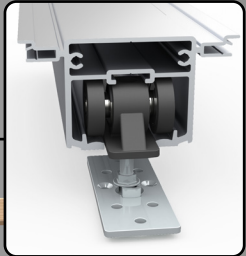


Smooth running carriages with encased ball bearings. Up to 500lb (240kg) capacity

**SofStop®**  
Soft Close/Soft Open also available



Corner joining brackets ensure precise right angled assembly



Extruded aluminum track incorporated into head unit

Split jambs and slats use hollow core technology for superior rigidity

Door thickness 1-3/8" or 1-3/4" (35 or 44.5mm)

Strong aluminum frame complies with Type 1 Construction

Horizontal slats for added strength

Compatible with 3-1/2" and 3-5/8" wood or steel stud

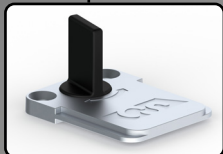


T-joining brackets for easy assembly of slats to split jambs and back stud



Trim clips for quick and easy trim fitting

Bottom plate assembly



Adjustable T-Guide

Patent Pending



Cycle Tested 1 Million Openings



ADA Compliant



Available with SofStop®



Single or Bi-Parting Units



Maximum Door Weight



Easy Assembly

# Quality Sliding Door Hardware

## Standard CL200 Range

The CL200 is a durable range of sliding door hardware suitable for residential, commercial, and hospitality applications. Privacy handles incorporate a patented magnetic latching system\*, ensuring a smooth locking action.

### Design Features & Options

- Two face plate widths available
- Handles can be adjusted to suit doors from 1-3/8" to 1-1/2" or 1-5/8" to 1-3/4" thick
- Integrated snib button allows more space in the side pull
- Handles are not handed
- Easy to follow instructions

\*Patent pending



Satin Nickel



Oil Rubbed Bronze



Matte Black



## Premium CL400 Magnetic

Available  
Special Order

### Design Features & Options

- Configurations include Passage, Privacy, Bi-Parting and Key Locking
- Door slides flush back into the pocket
- Suits doors from 1-3/8" to 2-1/4" thick
- Available in a range of finishes
- Non-magnetic version available



Bright Chrome



Satin Chrome



Satin Nickel



Oil Rubbed Bronze



Matte Black

